

WINTEC

QINGDAO WINTEC SYSTEM CO., LTD.

Wintec Park, Xinye Road, High-Tech Zone,
Qingdao, China

www.wintec.co

ACS-S60E

User Manual

Table of contents

Table of contents	2
Introduction	3
Product description	3
Product features	3
Specification	3
Product Usage	5
Packing list	5
Product appearance	5
I/O ports	7
Device Installation	8
General operations	10
Operating System	11
Common Configuration	12
Hardware-Software Integration	13
Troubleshooting	14
Revision sheet	15

Introduction

Product description

ACS-S60E is a multi-functional electronic cash register scale, integrating weighing, printing, AI recognition and touch control functions, with optional AI camera, MSR and other peripherals. The modular design and the label printer can meet the individual needs of different users, making it ideal for retail and catering businesses. Equipped with main screen and secondary screen (optional) two displays, beautiful appearance; equipped with high-performance and low-power processor, stable and reliable operation; simple quick-release machine design, easy maintenance; modular design can easily expand the peripheral applications; fanless and noiseless design; able to adapt to a variety of harsh environments.

Product features

- Support RK35682/N972 and other platforms, choose as you like
- Modular design concept of the whole machine, maintenance is more convenient
- 4Ω5W speaker, ultra 100db sensitivity, sound quality is clearer
- Split scale platform design, plug and play, transport and save. Plug-and-play, transport saving
- Various sensor specifications can be selected, adapting to more scenarios
- Magnetic cable compartment cover, hidden cable routing, desktop is more simple
- Various screen combinations to choose from
- AI camera, 3D camera, MSR, 4G all-network communication Modules and other peripherals can be selected
- independent external label printer, easier to maintain

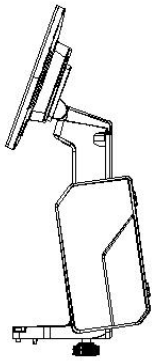
Specification

Name	663S0E	666T0E	661T0E
CPU	N97	RK3399	RK3568
Memory	8GB DDR4, up to 32GB	4GB	
Storage	128GB M.2, up to 512GB	32GB	

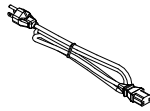
Main display	<ul style="list-style-type: none"> a. 15.6 inch ,1920*1080 b. 15.6 inch ,1366*768 		
Touch Screen	Multi point capacitive touch screen, USB interface	Multi point capacitive touch screen, IIC interface	
Secondary Display	<ul style="list-style-type: none"> a. 15.6 inch, 1920*1080 b. 15.6 inch, 1366*768 c. 11.6 inch, 1366*768 d. None 		
Speaker	Stereoscopic speaker, 1 * 5W		
Camera	2D camera (200W pixel, wide dynamic)		
Printer	60mm Label Printer (Auto-peel)		
Weighing Sensors	<ul style="list-style-type: none"> a. Range: 6/15kg Index: 2/5g Accuracy: 1/3000 b. Range: 15/30kg Index: 5/10g Accuracy: 1/3000 		
WIFI	<ul style="list-style-type: none"> a. Dual-band 2.4GHz/5GHz; BT4.0 b. Single-band 2.4GHz; BT4.0 c. None 	Dual-band 2.4GHz/5GHz; BT4.0	<ul style="list-style-type: none"> a. Dual-band 2.4GHz/5GHz; BT4.0 b. Single-band 2.4GHz; BT4.0
IO ports	<ul style="list-style-type: none"> 4*USB 2*COM port 1*Ethernet port 1*Cash drawer port 1*HDMI port 1*DC_IN 	<ul style="list-style-type: none"> 4*USB 2*COM port 1*Ethernet port 1*Cash drawer port 1*HDMI port 1*DC_IN 1*OTG port 	
Ethernet	10/100/1000M adaptive		
Temperature	<ul style="list-style-type: none"> Operating temperature: 0 - 40℃ Storage temperature: -20 - 55℃ 		
Humidity	<ul style="list-style-type: none"> Operating humidity: 20% - 95%RH Storage humidity: 20% -95%RH 		

Product Usage

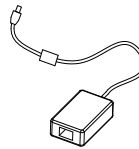
Packing list



POS host



Power cable



Adapter



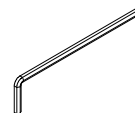
Product certificate



Platform for weighing scales



Serial port cable



Allen key

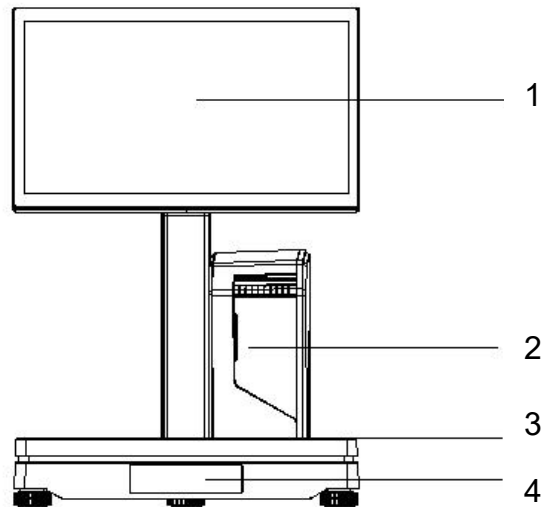


Screw pack

Content	Quantity
POS host	1
Power cable	1
Adapter	1
Product certificate	1
Platform for weighing scales	1
Serial port cable	1
Allen key	1
Screw pack	1

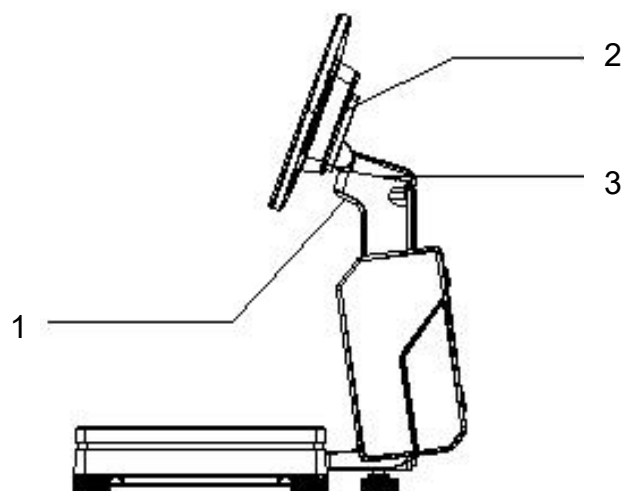
Product appearance

Front View



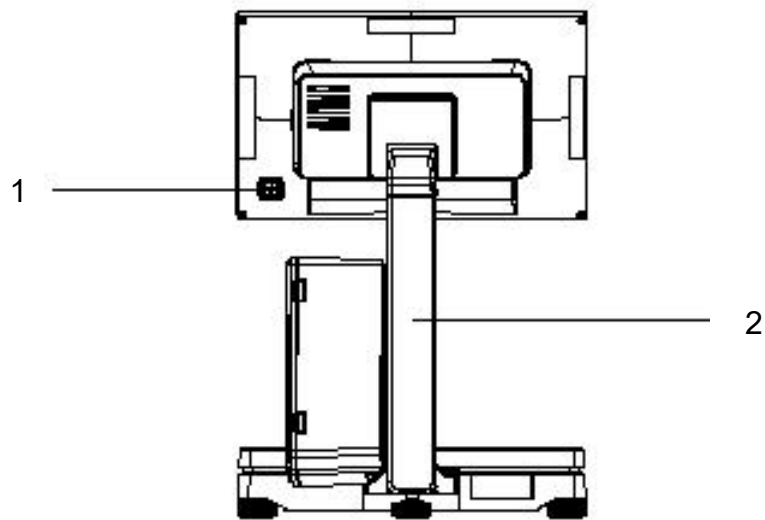
Number	Description
1	Main display
2	Label printer
3	Steelyard
4	Digital display module (optional)

Side View



Number	Description
1	AI camera
2	Speaker
3	Spool cover

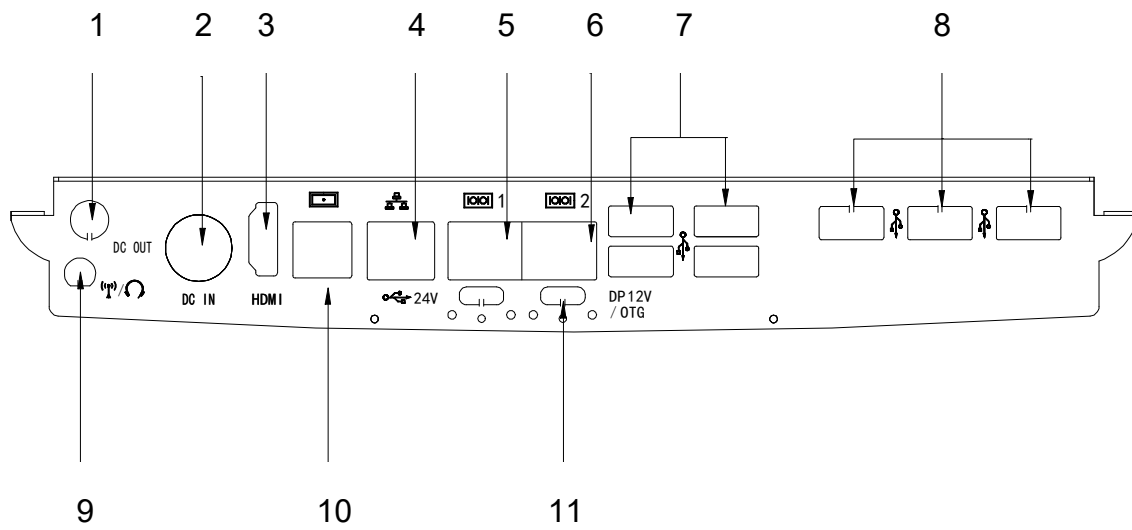
Back View



Number	Description
1	Power button
2	Line cover

I/O ports

663S0E/666T0E/661T0E

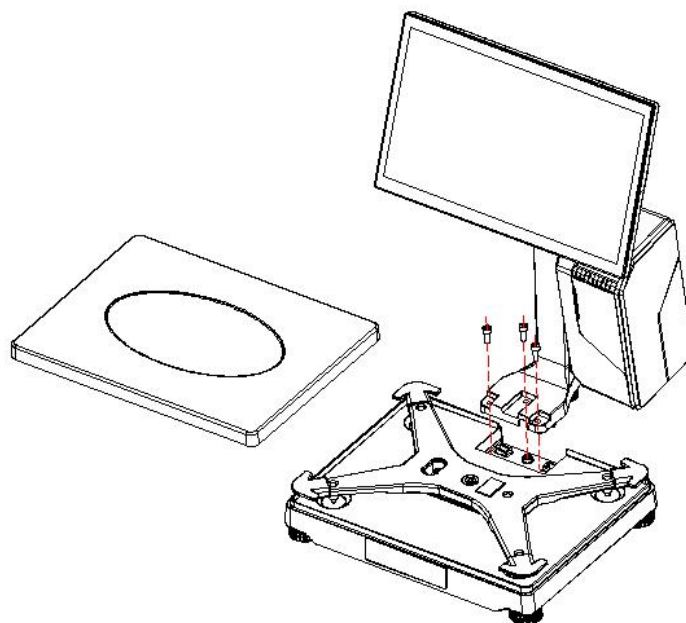


Number	Description
1	12V Power output port
2	24V Power input port
3	HDMI port
4	Ethernet port
5	663S0E: COM1 666T0E / 661T0E: COM0
6	663S0E: COM2 666T0E / 661T0E: COM1
7	USB port
8	USB port
9	Antenna/headphone jack
10	Cash drawer port
11	663S0E: None 666T0E / 661T0E: OTG port

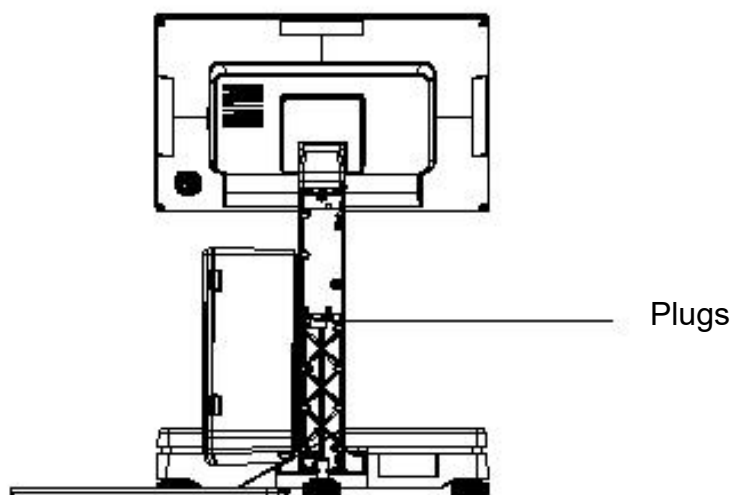
Device Installation

Complete machine assembly

1. Use 5mm Allen wrench to fix the pos host and scale platform firmly by 3 M6x16 screws. As shown in the picture below:

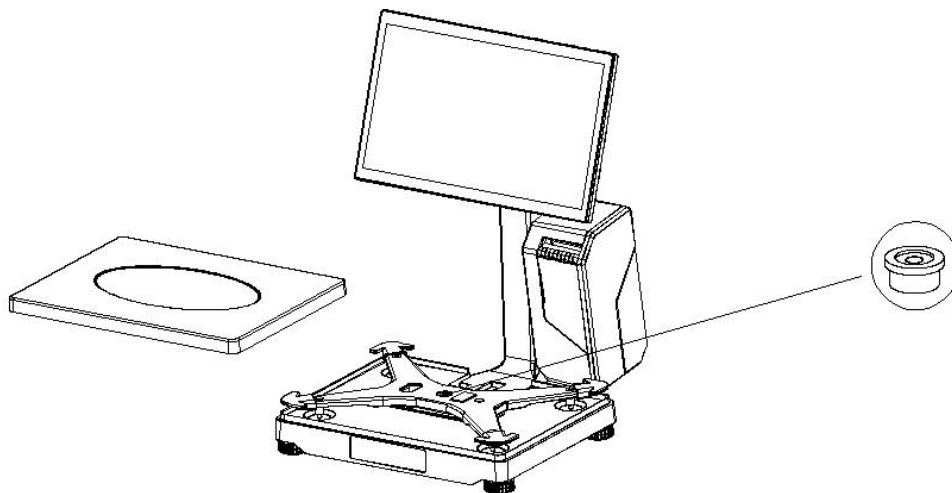


2. Open the wire compartment cover and pass the cable for the scale connection through the threading port on the bottom of the riser, inside the riser, to complete the connection of the blanking plug. This is shown in the diagram below:



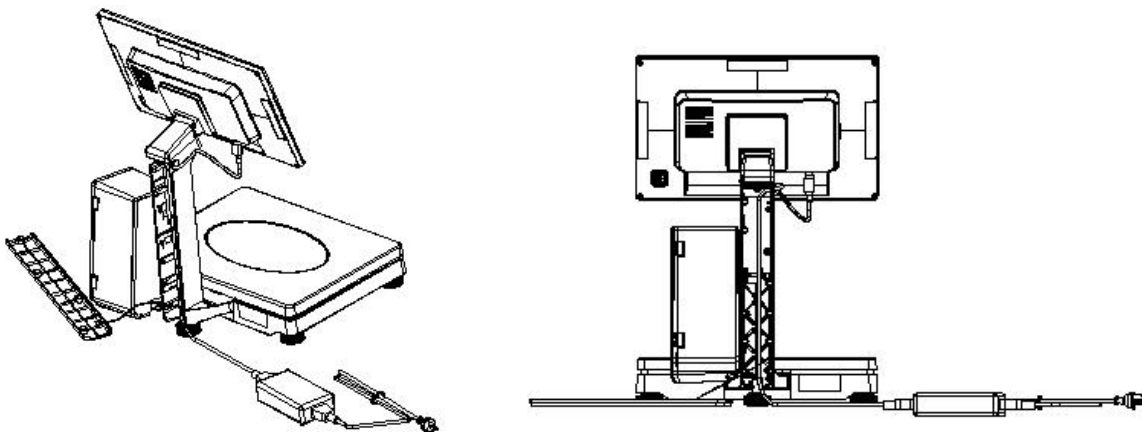
Weighing platform adjustment

1. Remove the scale and adjust the 5 adjustable feet to center the bubble level position according to the level bubble meter as follows.



Cable Management Program

1. Open the rear magnetic cable compartment cover.
2. Insert one end of the adapter into the DC IN port of the terminal block, extend the adapter cable into the side riser notch, into the cable compartment, and secure the cable with the cable management clip. The other end of the adapter is connected to the power cord. As shown in the figure below.



General operations


Power on

Android: Long press the switch button, hear the "drop" sound, let go, and wait for the boot.

Windows: Press the power button, release it, and wait for the power to turn on.

Power off

Android: Press and hold the switch button, and select the shutdown option in the pop-up dialog box to shut down the system.

Windows: Under the system, click the "" button in the lower menu, select the shutdown option, and shut down the system.

Note: Do not turn off the power directly or pull out the power cable. This may cause damage to the device.

Operating System

663S0E

- Windows

Peripherals	Port name	Parameters
Label Printer	USB	USB2.0
AI camera	USB	USB2.0
Scale	COM6	Baud rate: 9600 Parity: n Data bit: 8 Stop bit: 1

666T0E/661T0E

- Android

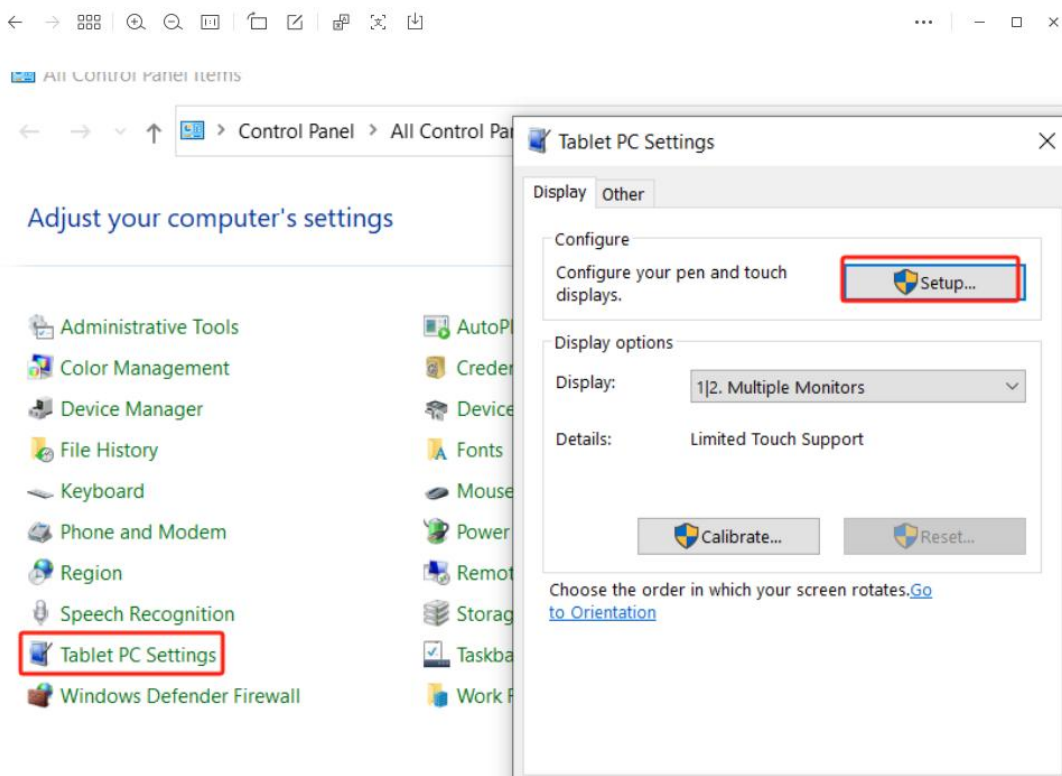
Peripherals	Port name	Parameters
Label Printer	USB	USB2.0
AI camera	USB	USB2.0
Scale	COM4	Baud rate: 9600 Parity: n Data bit: 8 Stop bit: 1

Common Configuration

663S0E

Dual-screen configuration

1. When dual-screen device is configured with dual-screen expansion, the touch on the main screen will be fed back to the secondary screen, and the touch screen needs to be bound in the Control panel - Tablet Settings, as shown in the following figure:
2. Go to the Control Panel and find "Tablet Settings".



3. Click the "Settings" button in the "Display" TAB.

Tap this screen with a single finger to identify it as the touchscreen.

If this is not the Tablet PC screen, press Enter to move to the next screen. To close the tool, press Esc.

4. Switch the interface displayed at the top to the screen where the touch screen is located, and then tap the touch screen with your hand to bind the touch screen.

Hardware-Software Integration

663S0E

File name	Description
Driver	The driver is stored in the Drivers folder on the D drive of your Windows system

666T0E/661T0E

File name	Description
Wintec SDK	Wintec Software Development Kit V2.49

Troubleshooting

If you are experiencing trouble with your device, refer to the following table. If the problem persists, please contact your local dealer or the WINTEC service center.

Issue	Recommended solutions
Device fails to power on	Turn off the power, check that the adapter power cord connection is tight, and unplug the power supply.
Digital display module does not light up	Check that the digital display switch is turned on.

Revision sheet

Version	Change description	Author
1.0.0	Initial Release	Wenjie Li